

JACK

China No.1

Shanghai stock
listed



Jack Wechat

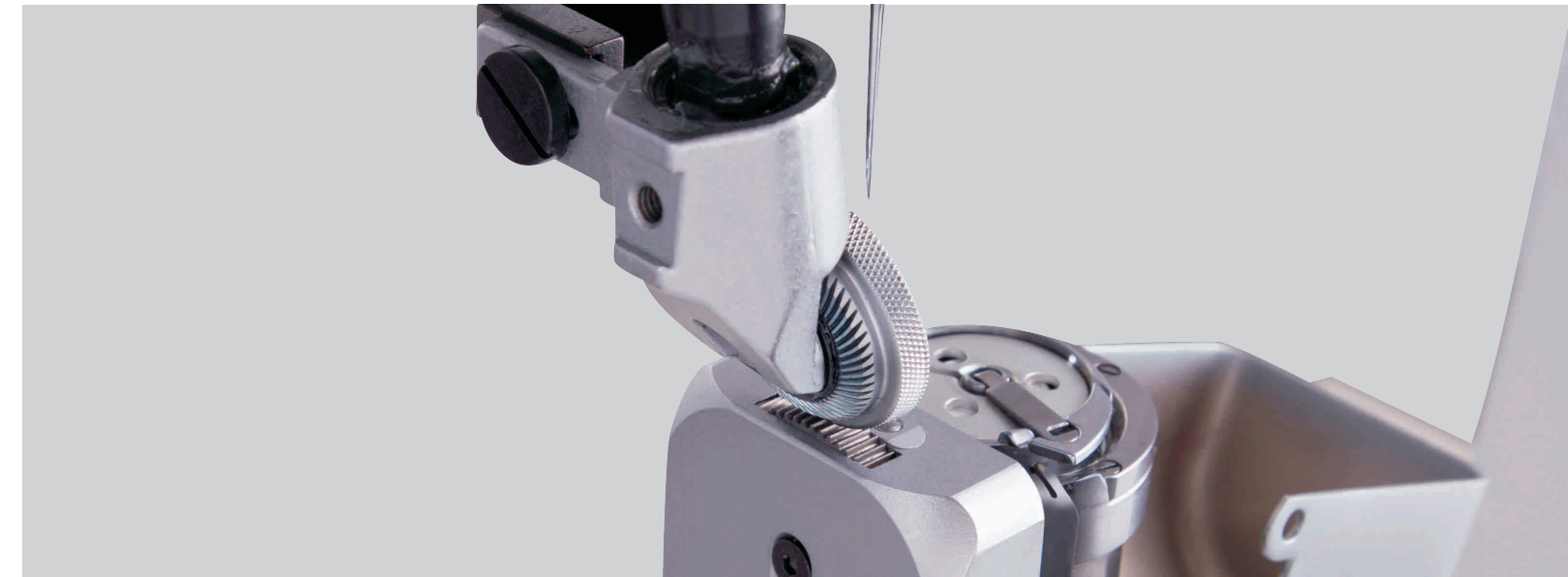


Jack Sewing Machine Co.,LTD.

JACK SEWING MACHINE CO.,LTD.

No. 15 South Airport Road, Jiaojiang District, Taizhou, Zhejiang, PRC
TEL: 0086-576-88177782 88177767
FAX: 0086-576-88177787

E-mail: sales@chinajack.com
www.chinajack.com



Full Automatic Drive Roller Slim Post Bed Sewing Machine With Top And Bottom Feed

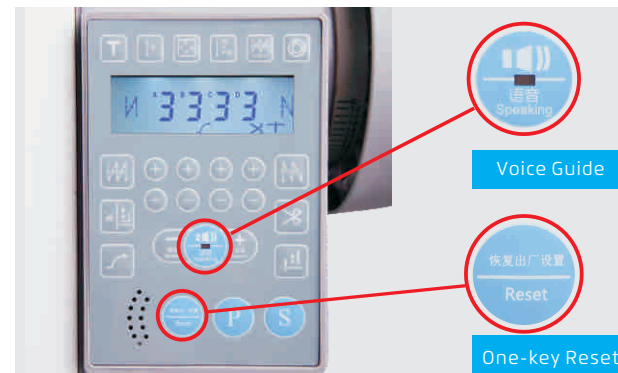


JK-6681

JK-6681

Descriptions: JK-6681 Fully automatic drive roller slim post bed sewing machine with top and bottom feed
 Feature: Beautiful stitch, quick service, easier to use

The applications of Full Automatic Drive Roller Slim Post Bed Sewing Machine With Top And Bottom Feed: handbags, children's shoes, baby shoes, riding boots, etc.

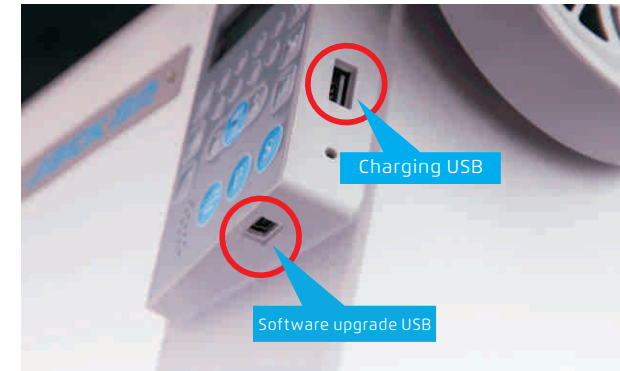


1 Flexible operation, adaptable

With slim post-bed design, machine is suitable for the sewing the bottom, side and corner of small and tridimensional products.

2 Voice Guide; One-key Factory Reset

- ① Voice guide, Automatic broadcast failure and solution, easy to learn and easy to use;
- ② Able to reset user parameters as needed, more humanization, do not worry about disoperation.



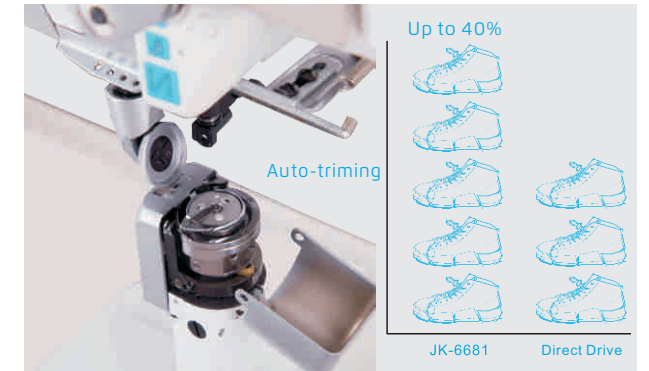
3 Intelligent dual USB port

With standard charging and software upgrade USB port, it is very convenient to upgrade the electronic control software later.



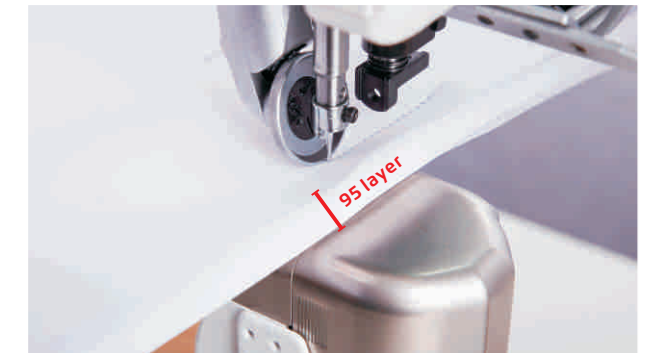
5 Stitch Overlap rate is 100%

Stitch overlap rate of front and back stitches are 100%, beautiful stitch, high yield.



4 Integrated control box, High Efficiency

Standard automatic thread trimmer, automatic reverse, automatic presser foot lifter, efficiency can be increased by more than 40%.



6 Strong Puncture Ability

It can puncture A4 paper of more than 95 layers at one time, and easy to stitch the super thick fabric of labor protection shoes.

Technical Parameters

Model	Max. Speed (S.p.m)	Needle	Presser Foot Lifting Height (mm)	Max. Stitch Length (mm)	Needle Bar Stroke (mm)	Automatic Thread Trimmer	Auto Backstitch	Auto Presser Foot Lifter	Auto Reverse	Volume (mm)	Weight (kg)
JK-6681	3000	INDPX5#16	7/12	5	41	✓	✓	✓		812×375×724	75
JK-6681-1	3000	INDPX5#16	7/12	5	41	✓	✓	✓	✓	812×375×724	75